

Optoma S316 Projector

Alex Vidmar - 2023-10-17 - Comments (0) - Loaner Equipment

The Service Center provides portable Data Projectors by Optoma.

To find out about loaning one, visit [this website](#) for our loaner policy.



To read the manufacturer's manual click on a link below:

<https://www.optomausa.com/ContentStorage/Documents/0a9ab9a0-2c74-4792-821f-e503479f3289.pdf>

If you borrowed one and want to know how to use it, view our instructions below.

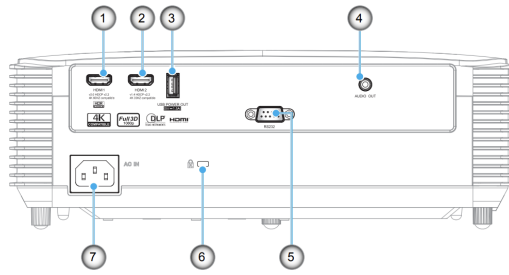
Contents

- Projector
- Power Cable
- HDMI Cord
- Remote (most kits)
- Carrying Case

Connecting the Projector

***Instructions may vary for each model. Please refer to the manuals at the end of this document.**

Connections



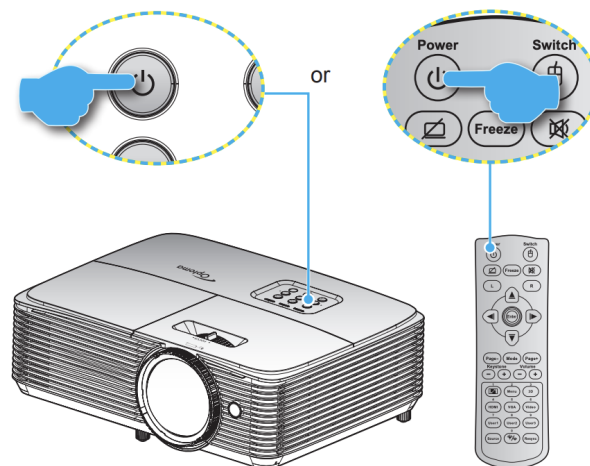
| No | Item | No | Item |
|----|---|----|-----------------------|
| 1. | HDMI 1 Connector (4K 60Hz) | 5. | RS232 Connector |
| 2. | HDMI 2 Connector (4K 30Hz) | 6. | Kensington™ Lock Port |
| 3. | USB Power Out (5V 1.5A) Connector / SERVICE Connector | 7. | Power Socket |
| 4. | AUDIO OUT Connector | | |

Note:

- To ensure the best image quality and avoid connection errors, we recommend the use of High Speed or Premium Certified HDMI cables up to 5 meters.
- Remote mouse requires special remote control.

Turning ON/OFF

Powering on / off the projector



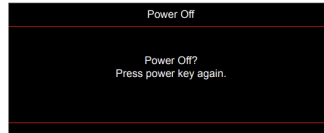
Powering on

1. Securely connect the power lead and signal/source cable. When connected, the On/Standby LED will turn red.
2. Turn on the projector by pressing the "⏻" either on the projector keypad or the remote control.
3. A start up screen will display in approximately 10 seconds and the On/Standby LED will be flashing green or flashing blue.

Note: The first time the projector is turned on, you will be prompted to select the preferred language, projection orientation, and other settings.

Powering off

1. Turn off the projector by pressing the "⏻" either on the projector keypad or the remote control.
2. The following message will be displayed:



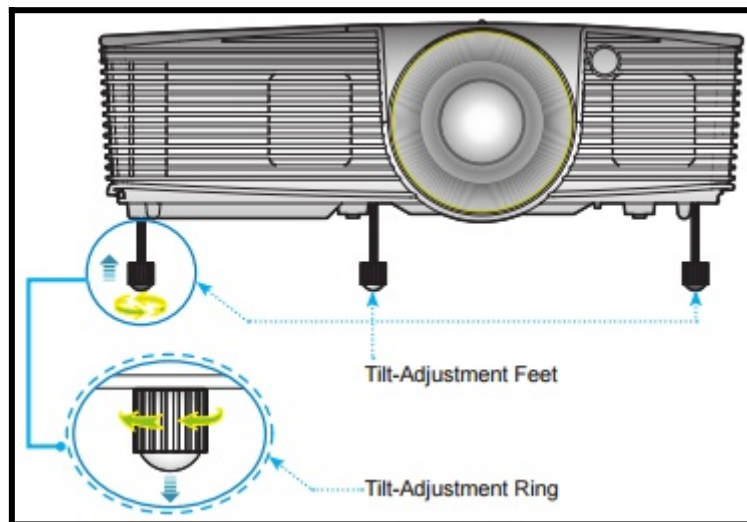
3. Press the "⏻" again to confirm, otherwise the message will disappear after 15 seconds. When you press the "⏻" button for the second time, the projector will shut down.
4. The cooling fans will continue to operate for about 10 seconds for the cooling cycle and the On/Standby LED will flash green or flash blue. When the On/Standby LED turns solid red, this indicates the projector has entered standby mode. If you wish to turn the projector back on, you must wait until the cooling cycle has finished and the projector has entered standby mode. When the projector is in standby mode, simply press the "⏻" button again to turn on the projector.
5. Disconnect the power lead from the electrical outlet and the projector.

Note: It is not recommended that the projector is turned on immediately, right after a power off procedure.

Adjusting the Projector's Height

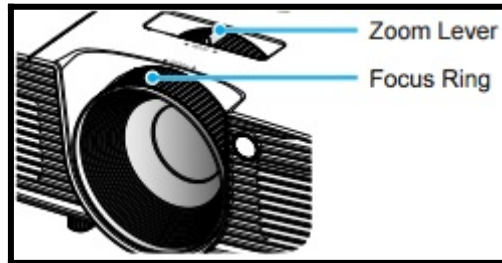
The projector is equipped with adjustable feet for altering the image height.

1. Locate the foot/feet that wish to adjust on the bottom of the unit.
2. Rotate the adjustable ring clockwise to raise the projector or counter-clockwise to lower it. Repeat as needed.



Adjusting the Projector's Zoom/Focus

Turning the zoom ring will cause the projection to zoom in or out. To focus the image, rotate the focus ring until the image is clear. Rings should be labeled. This projector is an SVGA series, and will focus at distances from 3.28 to 39.4 feet (1.0 to 12.0 meters).



Having Trouble?

If you are having any trouble after following these brief instructions, or you have received a different model than the one described above, please click the link below that corresponds to the model which you have rented. This will bring you to the manufacturer's manual which will have a more comprehensive overview.

Related Content

- [IT Service Center Loaner Equipment](#)