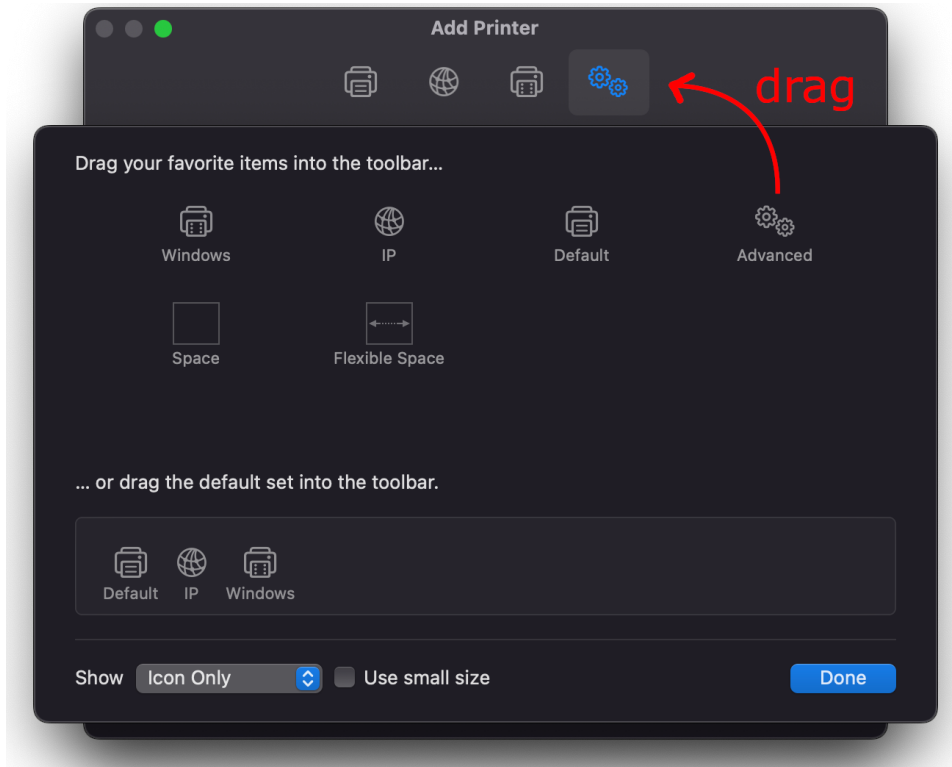


## Connecting to the printer in 70 Ship St. room 519 from a Mac

David Blair - 2023-02-13 - Comments (0) - Departmental Printing

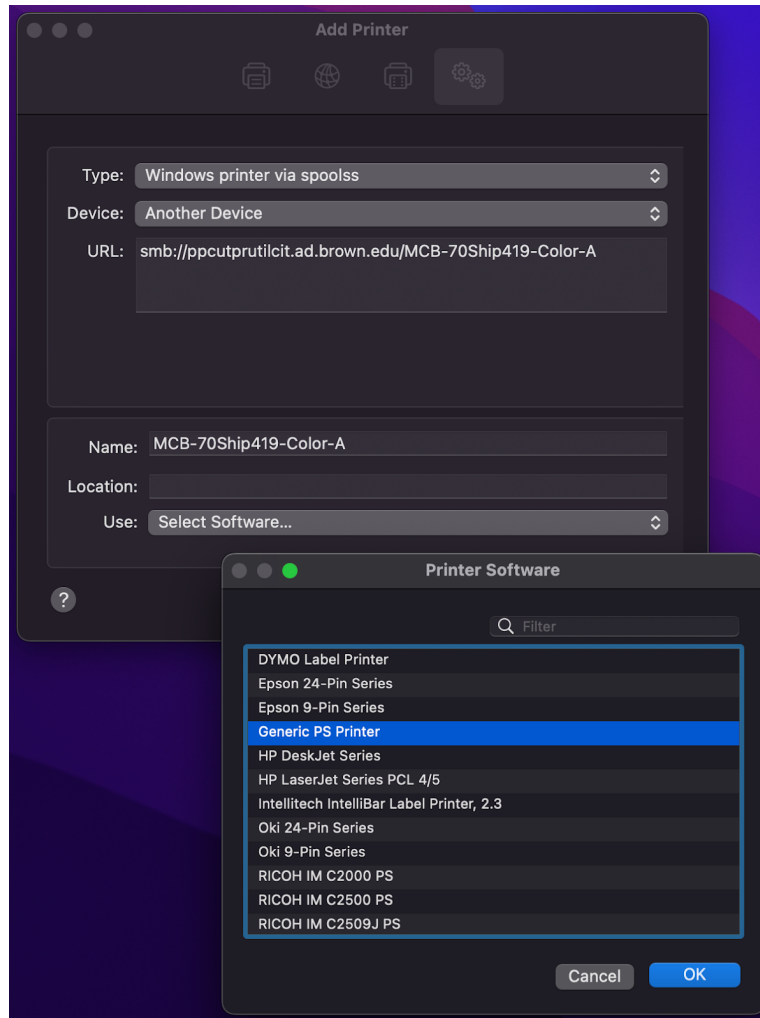
Connecting to the printer in 70 Ship St. room 519 from a Mac

1. Make sure you are on Brown (secure) WiFi, connected to the VPN, or using a wired network connection on the Brown campus
2. Click on the **Apple** menu (top-left corner of the screen), then on **System Preferences** or **System Settings** (depending on macOS version). This will open the System Preferences/Settings app.
3. Click on **Printers & Scanners** (or a similarly-named section, depending on macOS version)
4. In the printer dialog box that appears, click the **+** (**plus sign**) beneath the list of printers on the left to add a printer. The "Add Printer" dialog box will appear.
5. Right-click or control-click on the toolbar at the top of the "Add Printer" window where the tabs/icons are, and then drag the "Advanced"/gears icon into the toolbar (i.e. where it's shown in blue below) as shown below. When finished, click **Done**.

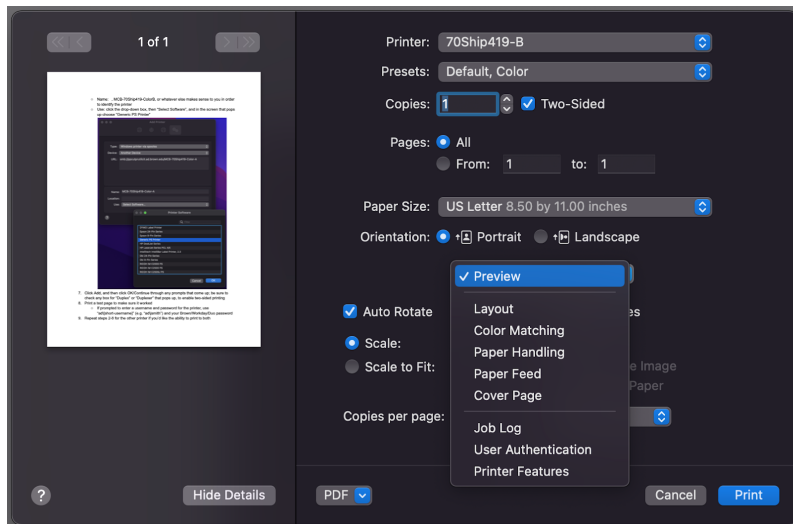


6. Click on the newly-added **Advanced** tab (with the gear icon), wait for it to finish "Searching for printers...", and then set up the printer as follows:
  1. Type: "Windows printer via spoolss"

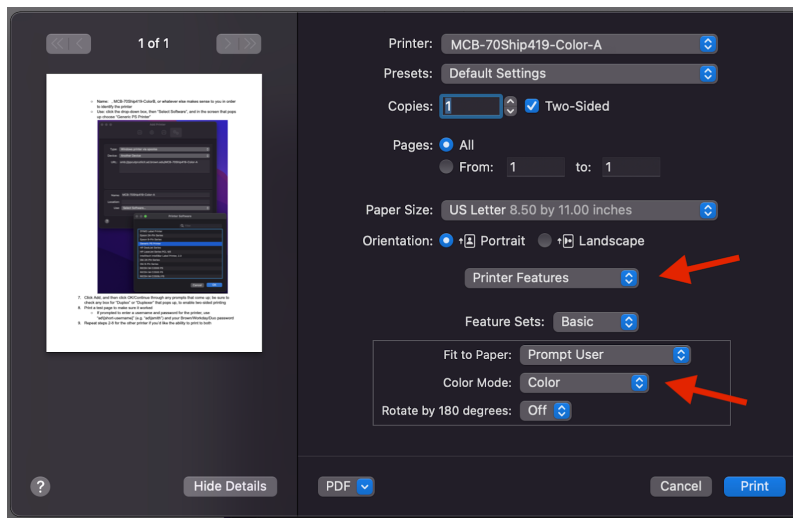
2. Device: Another device (default option)
3. URL: smb://ppcutprutilcit.ad.brown.edu/PLM-70Ship519-BW?encryption=no or  
smb://ppcutprutilcit.ad.brown.edu/PLM-70Ship519-Color?encryption=no
4. Name: PLM-70Ship519-BW , PLM-70Ship519-Color, or whatever else makes sense to you in order to identify the printer
5. Use: click the drop-down box, then "Select Software", and in the screen that pops up choose "Generic PS Printer":



7. Click **Add**, and then click **OK/Continue** through any prompts that come up; be sure to check any box for "Duplex" or "Duplexer" that pops up, to enable two-sided printing
8. Open a document on your computer with which to test printing, and select **File > Print**; you can also use Google Chrome and press Option-Command-P to "Print with System Dialog".
9. In the standard macOS printing dialog window that comes up, change the Color Mode to "Color" by doing the following:
  1. Select the "Printer settings" option from the drop-down box right under where you pick portrait or landscape printing:



2. Set the color mode to “Color”:



10. Print a test page to make sure it worked

1. If prompted to enter a username and password for the printer, use your Brown username and password

11. Repeat steps 2-10 for the other printer if you'd like the ability to print to both