



Accessing Banner Administrative Application

Kyle Oliveira - 2021-01-21 - Comments (0) - Banner

Administrative access is required to sign into Banner.

On November 17th, 2018, a new version of Banner INB will be available. This version doesn't require Java and works on more browsers. For more information, see brown.edu/go/banner9upgrade

Banner Admin Pages (version 9)
<https://bannernav.brown.edu/applicationNavigator/>

Banner INB (version 8)
<https://banner.brown.edu>

Supported Browsers

Browser	Supported in Banner 9	Supported in Banner 8 INB
Chrome	X	not supported
Firefox	X	not supported
Internet Explorer	not supported	X
Microsoft Edge	X	not supported
Safari	X	not supported

Shibboleth Single Sign-On

To log in, use your Brown user name (for example, jcarberr) and the password you maintain in myaccount.brown.edu—same as Workday.



Authentication Required


Enter your Brown credentials

Username
jcarberr x

Password

Log In

You have asked to log in to:


BROWN

Banner 9 Admin Pages

Use the same user name and password as Workday.

[Brown Home](#) | [Help](#) | [myAccount](#) | **New Users:** [Activate your account now](#)



Shibboleth. Need to know more? Learn more about [Shibboleth at Brown](#).

Improved User Interface

- Fresh look and feel
- Modern, yet familiar, web user interface with standard controls
- Shorter learning curve for new and occasional users

Keyboard Shortcuts

Download the [Banner Keyboard Shortcuts job aid](#). Several shortcuts have changed in [Banner 9](#).

Tablet Friendly

[Banner 9](#) is supported on tablets.

What stays the same?

The basic structure of the application remains the same. Banner pages (previously called forms) have a new look and feel, but page layout and behavior remains very similar to [Banner 8](#).

This upgrade has no impact on [Banner Self-Service](#) and other Banner-related applications (Greensheets, GSIM, Course Evaluations, Course Proposals, and Course Offering Builder).

Video Tutorial (12:29)

[Log in to Banner 9](#) and, as you watch, pause the video and try what's demonstrated yourself.

To jump ahead or re-watch a topic, use these timestamps:

- 3:15 Keyboard Shortcuts
- 3:30 How to access pages from landing page
- 7:09 Page layout and features
- 10:37 Notification Center
- 11:12 Online help

Where do I go for help or questions about Banner 9?

Submit a [help request](#).

Known Issue

You are able to log on to [Banner 9](#), but when you navigate to an admin page (previously called forms) the page is blank.

To resolve this , [clear your browser cache](#), and then restart your browser.

Configuration Instructions for Banner INB (version 8)

Download and Install Java

[Download](#) and install the latest Java [here](#) for either macOS or Windows.

Configure Java

Windows

1.

1. Click the start menu and search for **configure java**

OR

1.

1. On Windows 10, **right-click** on the **Start Menu**, click on **Control Panel**.
2. On the top, right-hand corner, make sure the **View by:** selection is **Large Icons**.
3. Find and click on the **Java** icon.

macOS

1.
 1. Click on the **Apple symbol** on the top, left-hand corner.
 2. Click on **System Preferences**.
 3. Clcik on the **Java** icon.

Java Control Panel

Security tab

1.
 1. In the **Security** tab, make sure **High** is selected.
 2. Click on **Edit Site List...**
 3. Make sure the below entries are listed. You can click **Add** to input them. Make sure both options are displayed before continuing
2.
 - o
 - <https://banner.brown.edu/>
 - <http://banner.brown.edu/>
3.
 1. You will receive a warning when adding the second address. Click **Continue**.
 2. You should now see the sites listed in the **Exception Site List**.

Advanced tab

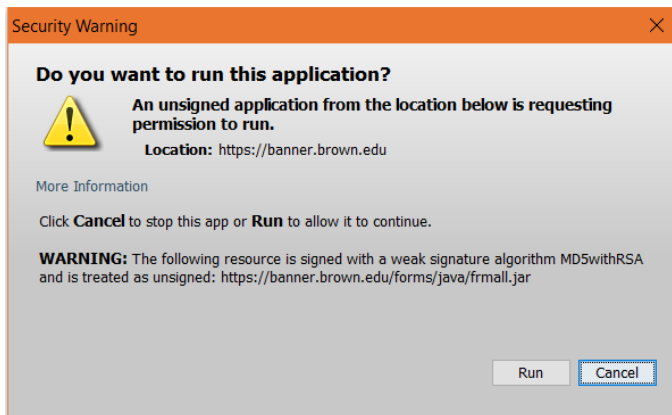
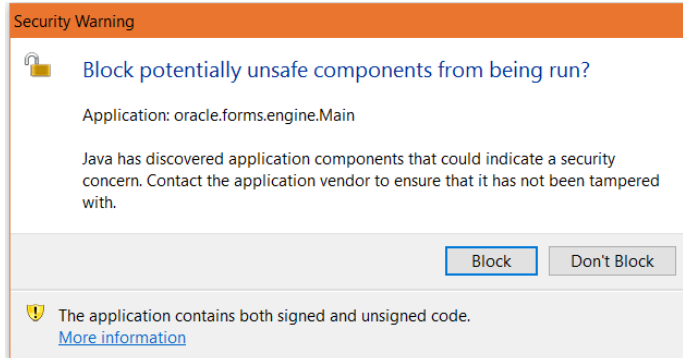
1.
 1. In the **Advanced** tab, scroll down to the very bottom or until you see the **Advanced Security Settings** section.
 2. Make sure that
2.
 - o
 - Use TLS 1.0 is **checked**.
 - Use TLS 1.1 is **unchecked**.
 - Use TLS 1.2 is **unchecked**.
3.
 1. Click **Apply** then **OK**.

You will need to **restart your browser** for these changes to take affect.

Supported Browsers: Safari and Internet Explorer

URL: <https://banner.brown.edu/>

You may receive warnings, notices or pop-ups when accessing this page.



DO NOT block the plugin from running.

ALWAYS ALLOW Java to run.

You may also receive a dialog box to **ACCEPT** the application running. Do so.

These directions can be applied to other Brown services using Java. Just add the address to the Site List in the Security tab.

e.g.

<https://jobscheduler.brown.edu/>

<http://jobscheduler.brown.edu/>